

Ashtons

11 Westward House Whitecross Gardens YO31 8LY

£1,200 Per Month

2



1



1

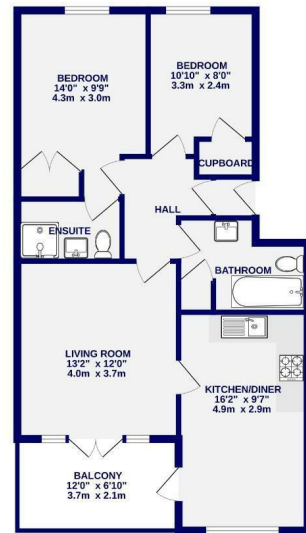


C

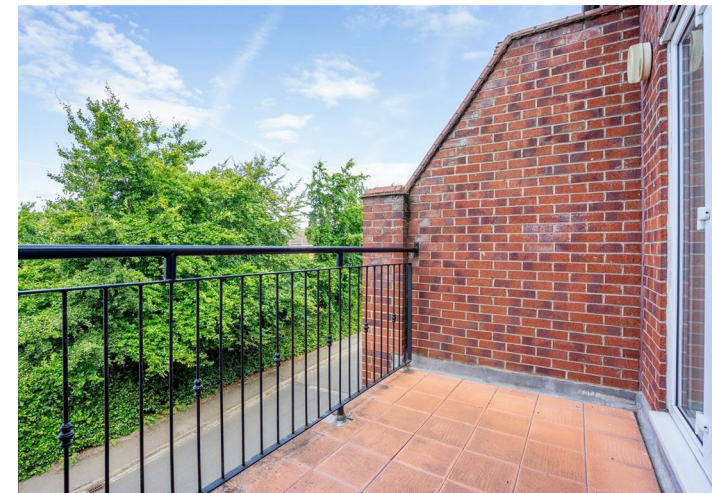


This second floor two bedroom apartment offered for let on an unfurnished basis. Within walking distance of the City Centre and excellently located for Nestle or York Hospital, as well as access to the outer ring road. The accommodation briefly comprises of entrance hall; living room with access to balcony; kitchen diner with appliances to include oven, hob, fridge freezer and washing machine; primary bedroom with ensuite shower room; second double bedroom; bathroom with shower over bath. Garage and driveway could provide two allocated parking spaces.

Available 28th May / 12 Month Tenancy / Council Tax Band D / EPC Rating C / Deposit £1300



TOTAL FLOOR AREA: 696 sq. ft. (64.7 sq. m.) approx.
 While every attempt has been made to ensure the accuracy of the floorplan, measurements of rooms and any other areas are approximate. It should be noted that the floorplan is not intended to be used as a legal document. The floor plan is for illustrative purposes only and should be used as such by any prospective purchaser. The numbers, letters and symbols in this floor plan are for reference only and do not constitute any part of the contract.
 Made with MyPlan 1000



Ashtons Lettings

01904 731404

lettings@ashtonsnet.com